

**STANDARD
ARRIVAL CHART
INSTRUMENT (STAR)**

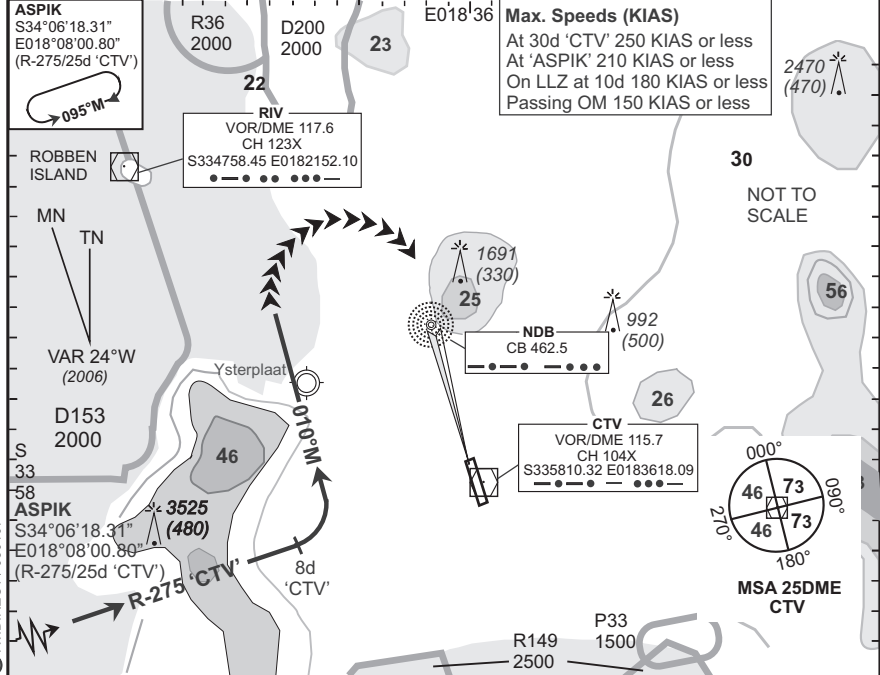


**CAPE TOWN INTL
RWY 19
ASPIK 1B**

Elev 151	T.alt 7500 T.lev ATC	Approach 119.7	Tower 118.1	ATIS 127.0	ARR-08
-------------	-------------------------	-------------------	----------------	---------------	--------

FACT

BEARINGS ARE MAGNETIC DIMENSIONS IN METRES ALTITUDES, ELEVATIONS AND HEIGHTS IN FEET. DISTANCES IN NM.	1. SIDS and STARS must be announced in operation on ATIS 2. SIDS and STARS will only be in force when Surveillance Radar is in operation 3. If unable to comply with SID or STAR, notify ATC	EFF 10 May 07
--	--	------------------



STAR	RWY	Routing (including Min Noise Routing)
------	-----	---------------------------------------

ASPIK 1B	19	Leave ASPIK on R-275 'CTV' (inbound). Passing 8DME 'CTV' turn left to track 010°M for radar vectoring onto the ILS RWY 19.
----------	----	--

Comm Fail (Squawk 7600)		Before ASPIK. Proceed to ASPIK and enter the ASPIK hold. Hold at last assigned level for minimum 5 minutes, then descend to 6500 FT ALT in the hold. Leave ASPIK on the after ASPIK Communication Failure procedure.
-------------------------	--	--

		After ASPIK. Continue on the routing for the ASPIK 1B STAR, maintain last assigned level. Crossing R-320 'CTV' on track 010°M, turn right direct to 'CTV' and descend to 6500 FT ALT. On reaching 'CTV' complete the VOR/DME/ILS approach and land RWY 19.
--	--	---

		Communication Failure Procedure for STAR: In the event of a missed approach with the intention of diverting to an alternate aerodrome, proceed as follows: To the east: TETAN ONE BRAVO SID. To the south-east: OKTED ONE BRAVO SID. To the north and north-west: KODES ONE BRAVO SID.
--	--	---

© AV/DIRECT / 050107

CAA South Africa